



Clear Yacht Interiors

Think different. Design different. Deliver different.

We **THINK** differently because our depth of understanding from both a left and right brain perspective allows us to meet the design and delivery challenges the marine industry demands. With over ten decades of combined experience, we focus on inventive ideas that defy past expectations and set new benchmarks in the maritime industry. We are constantly driven by our collective passions because every yacht offers a new adventure in creativity, ingenuity and authenticity. We are committed to creating the inimitable for every yacht that comes our way. And, we relish in the unique ability to fuse the “living at sea” experience with the “living on land” luxury design intelligence.

We **DESIGN** differently because we operate as a creative think tank conceiving ideas which can successfully and realistically be brought to life. This unique business model results in a more streamlined process with greater efficiency in design, planning and implementation. We thrive on idea generation, ingenuity and collaboration continually seeking creative alternatives which are not only replete with class, sophistication and cutting-edge features, but are also efficient, durable and capable of solving space, weight, functional and sustainability challenges.

We **DELIVER** differently because our fully integrated team of designers, technical experts, master woodworkers and artisans all work together under one roof. Our design studios and 10,000 SF joinery shop allow for most any major interior appointment to be fully designed and fabricated...from fine furniture, custom woodworking and joinery to innovative surface finishes, custom lighting and carpeting. And, because we design and build, we control the quality, scheduling and costs while delivering greater value to our clients.

Turn-key Interior Yacht Design at One Port-of-Call

- Interior Design - Concept to Completion
- 10,000 SF Woodworking and Joinery Facility
- Finishing Suite
- Computer and Hand Drawn Renderings
- Custom Designed and Built Furniture
- Innovative Finishes
- Custom Designed and Fabricated Lighting
- Custom Designed and Fabricated Carpeting
- Fine Art Consulting
- Fung Shui Consulting
- Construction/Trade Workmen Including Plumbers, Electricians, Installers



MARI CHA III

44.7M Performance Ketch
Atlantic Record Breaker 1998
Carbon Kevlar Sandwich Hull

Interior Refit

- 6500 + Hours
- Custom Woodworking
- Complete Wood Refinishing
- LED Lighting
- Interior Design Elements
- Upholstery
- Repair
- Stainless Steel Fabrication
- Custom Fittings



Custom Fabricated Hand Rail
with Stainless Steel Inlay

Dear Joyce,

I wanted to drop you a quick line to thank you and your team for the outstanding job you and your team have completed thus far on Mari Cha III. You have a truly talented team; the standard of finish of the paint and carpentry has far exceeded both my and the Mari Cha team's expectations.

I have been trying for the last two years to get the service business here in the CT yard to the next level. I believe that we are about there and with partners such as Clear Group we can continue this growth.

Once again, thank you.

Kindest regards,
Steve Shaw
Services Director, Derektor Shipyards

"...We are very pleased with the results."
Captain Damien Durchon





KELMAR
55' Hatteras Sport Fish

Complete Interior Refit

- Interior Design Concept & Execution
- Custom Woodworking/Joinery
- Custom Furniture Design & Fabrication
- LED Lighting
- Upholstery
- Repair
- Stainless Steel Fabrication
- Custom Fittings
- Exterior Hull Painting
- Aft End Reconstruction
- New Windows



“Joyce Clear is one of the most creative and professional individuals I've ever had the pleasure of knowing and working with. She is dedicated to providing her clients with innovative solutions that exceed expectations. Joyce is a very unique individual in a very unique industry.” *Owner*

BEFORE



Custom designed and built Bubinga dining table with stainless steel inlays and surfaces



Custom serpentine handrail with stainless steel inlay



Stainless steel and granite galley with Sapele cabinetry

“Joyce is an expert in yacht design interiors. She is capable, dedicated, and a consummate professional. She is always quick on her feet, with sensible reactions in all the circumstances I've seen her in. I feel confident in saying that she is capable of handling any situation with thoughtfulness and creativity.”

July 6, 2011
Hans Galutera, Co-Founder, BG Studio International Inc.



OTHER PROJECTS

Varied Work Including:

- Interior Design
- Custom Woodworking/Joinery
- Custom Furniture Design & Fabrication
- LED Lighting
- Upholstery
- Repair
- Stainless Steel Fabrication
- Custom Fittings
- Custom Art Protection
- Installation
- Plumbing
- Surfacing
- Tiling/Stonework
- Electrical



Northern Lights



Hyperion

Dear Joyce,

Thanks again for your help, much appreciate it has eased a big headache!

Best Wishes,
Lou Owen
Chief Stewardess
S/Y Hyperion

Dione Sky



“Joyce Clear and The Clear Group as a whole have been instrumental in the successful outcomes of some of our most high profile and ambitious refit and repair projects at Derecktor Shipyards over the last couple of years. Joyce is a pleasure to work with, she has a great ‘can do’ attitude and is very open to client input and flexible to any changes.”

Steve Shaw
July 11, 2011
Services Director, Derecktor Shipyards



Bayou



Cakewalk



CUSTOM JOINERY & WOODWORKING

- Complete renovations from stem to stern
- Precise field drawings
- Shop drawings
- CAD and Hand Drawings
- Construction Management
- Bespoke, lightweight, functional interiors
- Custom case work
- Teak deck installations
- Decorative inlays
- All species of exotic hardwoods and veneers
- All finishes
- Bright work



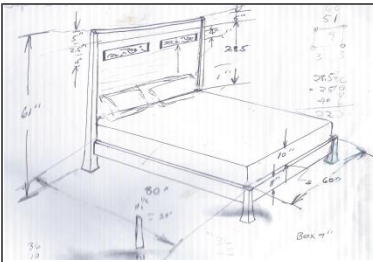
Dear Joyce,

...Clear Group provided the expertise we needed to enable the project to stay on track, and your quality is superb.

You are a pleasure to work with.

Regards Tom Derecktor
President, Derecktor Shipyards





CUSTOM DESIGNED AND BUILT FURNITURE

- CAD and Hand Renderings
- Shop Drawings
- Commissioned Pieces
- Solid Surface Materials
- Veneers
- Stone
- Metals
- Glass



Joyce has an excellent sense of design...She listened very well to our preferences and design objectives and produces exciting, artistic results in every case. All executions were sophisticated, high-quality results that blend in perfectly with our art, other colors and established style of living."

July 7, 2011
Robert Whitby, Greenwich, CT





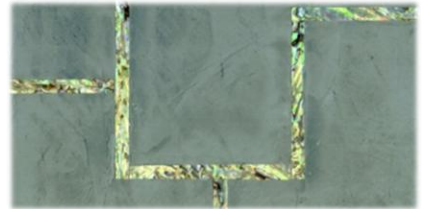
TURNKEY YACHT INTERIORS

- 10,000 SF Joinery Facility
- Finishing Suite
- CAD Drawings
- Hand Drawn Renderings
- Custom Designed & Built:
 - Interiors
 - Furniture
 - Lighting
 - Carpeting
- Innovative Finishes
- Fine Art Consulting
- Fung Shui Consulting
- Construction/Trade
- Workmen Including
 - Plumbers
 - Electricians
 - Installers



“Joyce is a talented, creative and hardworking designer who has put together a fabulous team of extraordinary craftsmen who can deliver what you dream.”

**August 14, 2011
Tamson Bickford Hamrock**



- Single point accountability for entire design project
- Unbridled creativity and innovation balanced with technical understanding
- Unlimited design and custom fabrication possibilities
- Streamlined and integrated coordination of all design & technical services

